



BLADON WA  
WE BRAND EVERYTHING

# NEW THINGS 2024



## JERSEY/FINCH STICKY NOTES

LL8821/LL8823

- Eco-friendly booklets containing adhesive sticky notes
- Crafted from recycled milk cartons
- Jersey (rectangle): 105mm x 69mm
- Finch (triangle): 90mm
- Has an embossed logo on the back that signifies their eco-friendly origin



## VENTURE SUGARCANE A5 NOTEBOOK

LL5098

- A5-sized notebook with 80 lined pages (80 GSM)
- Printed date field at the top of each page
- Crafted from recycled sugarcane materials
- Includes black ribbon page divider, black elastic closure strap, and black elastic pen loop



## ANDEAN NOTEBOOK

LL0941

- Compact size: 142mm x 210mm (WxH)
- 80 recycled lined pages featuring a date field in the top corner
- Cover crafted from 250 GSM Kraft paper
- Features a saddle-stitched spine



## ASPEN ALUMINIUM PEN LL2113

- Aluminium barrel with a smooth rubber oil coating
- Chrome push button, tip, and clip
- Matte finish
- Black ink



## ASPEN PLASTIC PEN LL1916

- Durable plastic barrel
- Chrome push button, tip, and clip
- Matte finish
- Black ink

## SERENITY ALUMINIUM PEN LL3298

- Aluminium barrel with a smooth rubber oil coating
- Bamboo push button and tip with Gunmetal Grey clip
- Clear plastic feature at the top of the barrel
- Black ink





## FELT TIP PENS

### LL2912

- Set of 12 vibrant, washable felt pens
- Bullet-tip for precise lines
- Clear double-locking PP case with a handle
- Each pen has a solid-coloured barrel and cap



## STAINLESS STEEL KEYTAG (HOUSE/CIRCLE/RECTANGLE)

### LL3527/LL3529/LL3531

- Available in various shapes: house, circle, and rectangle
- Crafted from durable stainless steel with a dark grey finish and acrylic border
- Stainless steel laser engraves to a crisp oxidized white colour



## PREMIUM ID BADGE HOLDER

### LL454

- Features a pocket clip on the back and a snap hook fitting
- Includes a folding plastic clip for pouch attachment
- Extension length of 910mm





## BAMBOO TISSUES

LL4683

- Eco-friendly bamboo tissues
- 10 three-layer bamboo tissues per pack
- Packaged in a 250 GSM Kraft box with a flap for easy access



## LIVELY TOTE BAG

LL2359

- Crafted from 330 GSM Recycled Canvas
- Large bottom gusset
- Spacious tote, the largest in the range, boasting a generous 29L capacity

## PARAMOUNT WALL CHARGER

LL9503

- This 20W + QC3.0 PD ABS wall charger is designed to meet Australian safety standards
- With an input range of AC 100V-240V 50/60Hz
- Features 1 x USB A port and 1 x Type C port, allowing you to charge two devices simultaneously
- Capable of delivering up to 20 watts



## REVEAL CABLE SET

LL9441

- Case made from Bamboo
- Cable accents made from wheat straw
- Lid can slide open or be detached
- Features a grey braided carry strap
- Supplied with Type C to Type C cable alongside Type A, Micro USB, and iOS connectors



## LEOPARD POWERBANK

LL9216

- Equipped with dual USB and Type C output ports and both Micro USB and Type C input options
- Includes a large 10,000mAh Li-ion battery and a 22.5W output
- The LED display provides the charge level
- Includes a 50cm 3.0A Type C to Type C cable

## WHYALLA PHONE STAND

LL7970

- This adjustable phone stand features a natural bamboo base and a wheat straw phone holder
- The base is equipped with four black rubber pads for enhanced stability, ensuring a secure grip on any surface



## RAVEN CABLE

LL9439

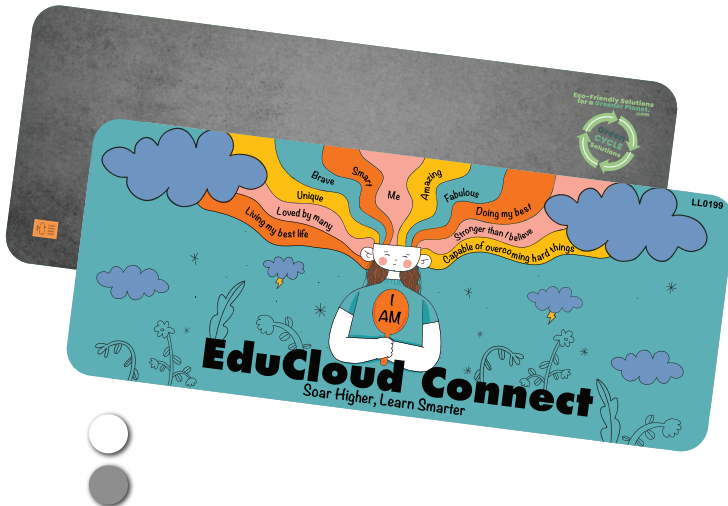
- 6-in-1 woven cable with power illuminating circular top section
- The connectors include Combo USB A/Type C on one end and Micro USB, iOS, and Type C on the other, each as a separate cable
- Cable length: approximately 1.2m
- Note: Designed for charging purposes only and does not support data transfer



## TASKTAMER DESK MAT

LL0199

- Crafted from 4mm thick Recycled Polyethylene Terephthalate (RPET) material
- Features an anti-slip backing
- Includes a distinctive brown RPET tag stitched onto the bottom left-hand corner
- The White mats are tagless to allow for seamless sublimation



## SILICONE STRAW IN CASE

LL8785

- A compact carry case holds the flexible, food-grade silicone straw
- Suitable for a variety of drinks including bottles, cans, and other drinkware





## DELIVER FOOD CONTAINER

LL6373

- Double-walled stainless steel food container
- 400ml capacity, equipped with a screw-open lid
- Suitable for both hot and cold foods and liquids
- Dimensions 130mm x 99mm



## EAGLE COFFEE CUP

LL0997

- Double-walled 300ml cup
- Secure screw-in flip-open PP lid with a black PP liner
- Includes a black foam protective layer on the base for added stability
- Suitable for both hot and cold liquids

## ENAMEL MUG

LL4924

- Stainless steel mug with enamel coating
- Sturdy handle for a comfortable grip
- 475ml capacity
- Interior of all mugs is a crisp white



## MYSTIQUE 950ML BOTTLE

LL6963

- Crafted from powder-coated, double-wall stainless steel
- Designed for both hot and cold liquids, offering a capacity of 950ml
- Features a twist-open lid and convenient carry handle



## RIZZ COFFEE CUP

LL1023

- Double-walled cup with a black PP inner and durable 201-grade outer, suitable for both hot and cold liquids
- Unique sliding lid
- Maximum capacity of 390ml



